

# GHD Monthly Newsletter

May 2023

The Global Help Desk (GHD), a part of the Office of Communications within the Institute for Basic Science (IBS), presents this monthly newsletter to introduce you to life in Korea and let you know some recent domestic news, holiday or event information, language support, recent IBS news, and free phone numbers to get help and support. All GHD newsletters are available online at the website Living in Korea at [www.ibs.re.kr/livinginkorea](http://www.ibs.re.kr/livinginkorea). Hosted by IBS, it has hundreds of pages of contents and photos to help you thrive, not simply survive.

## Living in Korea Highlight

COVID restrictions have lessened in recent months and the weather is getting quite comfortable. While most people know about Korean Air and Asiana, there are also a number of domestic low-cost carriers including Aero K, Air Premia, and Fly Gangwon which have only been around a few years. [Click here](#) for a list of airlines and airports.

## Domestic News and Notices



### Cheong Wa Dae to get face-lift to become tourist landmark

The culture ministry said Monday the former presidential office compound of Cheong Wa Dae, which was opened to public access about a year ago, will be transformed into a multifaceted tourist landmark with historical, cultural and natural value.

[Read more](#)

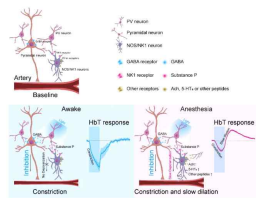


### Gimpo airport to launch care service for dogs

A dog care service will be available at Gimpo International Airport from June for passengers to check their pets into while they are traveling as part of the airport's moves to better cater to passengers with companion animals.

[Read more](#)

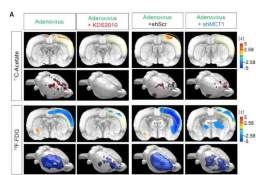
## IBS News and Events



### How the brain controls blood flow during sleep

Even while we are asleep, the brain does not rest completely. Surprisingly, the blood flow in a sleeping brain can be greater than when it is in a wakeful state. This allows the brain to remove waste metabolites, which is important to prevent the development and progression of neurological dysfunctions such as dementia. However, the exact mechanism of how the sleeping brain increases blood flow has not been known.

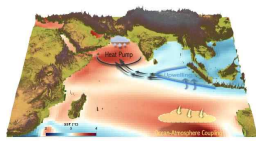
[Read more](#)



### A new breakthrough in Alzheimer disease research - visualizing reactive astrocyte-neuron interaction

Recently, a team of South Korean scientists led by Director C. Justin LEE of the Center for Cognition and Sociality within the Institute for Basic Science made a new discovery that can revolutionize both the diagnosis and treatment of Alzheimer's Disease. The group demonstrated a mechanism where the astrocytes in the brain uptake elevated levels of acetates, which turns them into hazardous reactive astrocytes.

[Read more](#)



### Uneven Indian Ocean Warming unlocked

A study published in Nature Communications by an international team of climate scientists uncovers the physical mechanisms that can cause uneven future warming in the Indian Ocean and corresponding shifts in monsoon precipitation.

[Read more](#)

## Regional Information



1330 Korea Travel Helpline  
1330 Korea Travel Helpline is a telephone and real-time chat service. We provide tourists from within and outside Korea with information about traveling in Korea.

[Learn more](#)



Title: Deoksugung Palace Royal Guard Changing Ceremony  
Period: 1 January 2023–31 December 2023  
Venue: Daehanmun Gate at Deoksugung Palace, Seoul

[Learn more](#)

## Let's Learn Korean!



[Click here](#) to learn how to say "It's boring." in Korean!

And [click here](#) for a good introduction to the Korean language.

## Individual Support

### Phone Numbers

#### Emergency

119 or interpretation provided by 1330 Korea Travel Hotline

#### Korea Travel Hotline & Complaint Center

1330 or +82-2-1330

#### Website

24/7: Korean, English, Japanese, Chinese, Russian, Vietnamese, Thai, and Malay

08:00-19:00: Russian, Vietnamese, Thai, and Malay

#### Before Babel Brigade Korea (BBB Korea)

1588-5644

#### Website

24/7: English, Japanese, Chinese, Spanish, French, Russian, Italian, German, Portuguese, Arabic, Vietnamese, Mongolian, Polish, Turkish, Swedish, Thai, Bahasa Indonesia, Hindi, Bahasa Malaysia and Swahili

### Global Help Desk

If you are associated with the Institute for Basic Science and wish to get in contact with the Global Help Desk, please send an email.

## Events in Korea

KOREA.net

### Festivals

[Website](#)

### Exhibitions

[Website](#)

### Performances

[Website](#)